

# Block of the Month – April 2011

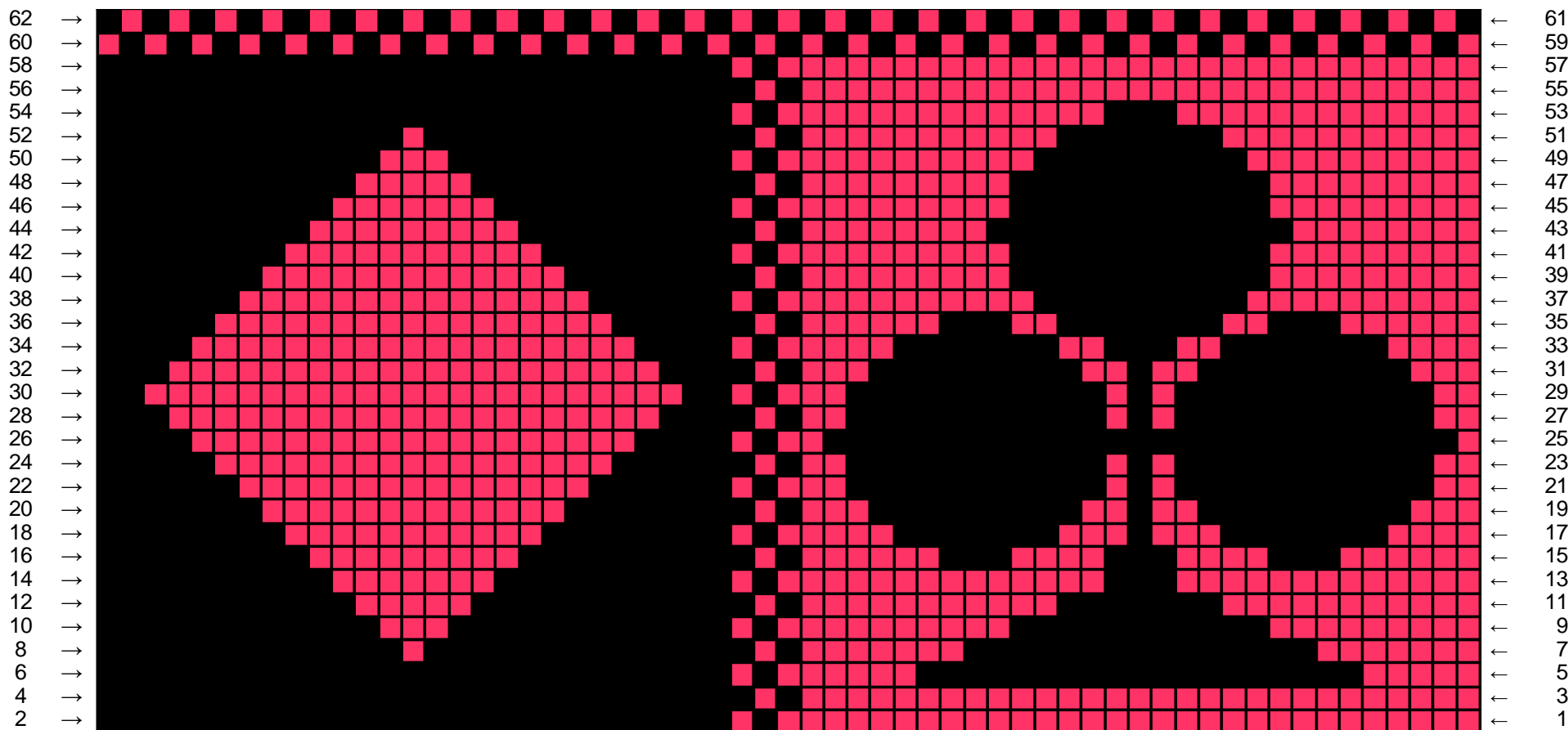
Cast on 61; knit every row; slip first stitch with yarn in front, knit last stitch (the chart shows rows doubled, do not slip the last stitch of any row.).

Odd numbered rows, knit the chart right to left; subsequent even numbered rows, knit the chart left to right the same colors as the odd row just knit.

Even rows, you will carry yarns on the FRONT of the work, so all floats and joins are hidden on the BACK side of the square when completed. You will twist all intarsia color changes, and all color stranding changes by bringing the working color to the back, move new color up and under the strand and moving it to the front of the work.

## First Chart

59 58 57 56 55 54 53 52 51 50 49 48 47 46 45 44 43 42 41 40 39 38 37 36 35 34 33 32 31 30 29 28 27 26 25 24 23 22 21 20 19 18 17 16 15 14 13 12 11 10 9 8 7 6 5 4 3 2 1



**Second Chart:**

